

ECART



CHRISTOPHE PILLET

AXE LAMP
(c. 1997)

Brushed stainless steel.

CM	IN
H. 27	H. 10.5
L. 61	W. 24
P. 14	D. 5.5

CHRISTOPHE PILLET

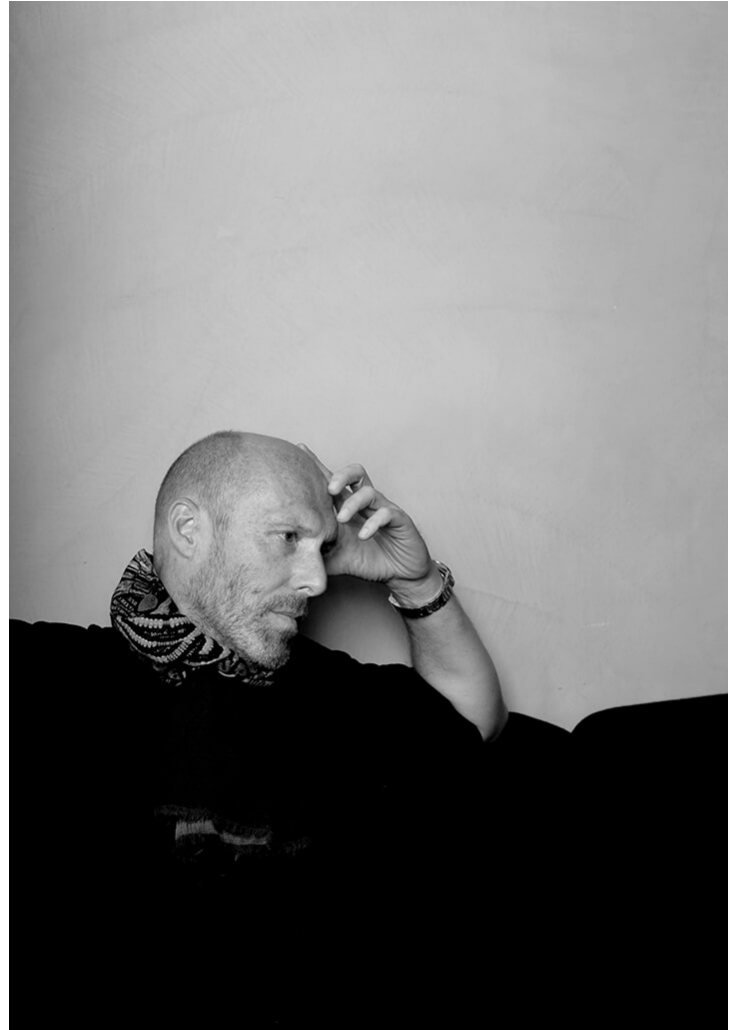
Born in Montargis in 1959, Christophe Pillet had a peripatetic childhood, following his parents through cities like Dijon, Guéret, Lille, Toulouse, and Saint-Raphaël. After earning his high school diploma, he was drawn to Milan's vibrant design scene and pursued his studies at the Villa Arson School of Decorative Arts in Nice. He then completed a master's degree at the Domus Academy, where he spent four years immersed in a flood of creative energy and ideas. During this period, he designed a lamp for the renowned Memphis collection.

Upon returning to Paris, Pillet joined Philippe Starck's agency, where he worked for five years. At the same time, he began developing personal projects, thanks to pivotal encounters with influential figures like Jean-Claude Decaux, Cappellini, Ecart International, and Domeau & Pérès. In 1993, he founded his own agency, creating objects imbued with stories and a spirit that invites imagination. That same year, he was named Designer of the Year at the Paris Furniture Fair.

Pillet's career path has been exemplary. In 2000, the Mobilier National entrusted him with designing furniture for the grandstand at France's Bastille Day celebrations. He has also built long-standing collaborations with Italian publishers like Driade, Ceccotti, and Serralunga. His design style is defined by sleek lines, elegant forms, and simplicity.

Pillet approaches his projects with the eye of a theater director, harmonizing light and materials to create chic, sensual atmospheres for hotels and boutiques in France, the USA, Japan, and the UK. His versatility spans multiple disciplines, including product design, interior architecture, scenography, and artistic direction. His sophisticated style has attracted major brands such as Lacoste, Jean-Claude Jitrois, Catherine Malandrino, Lancel, and Le Tanneur International.

His creative energy is continuously fueled by new encounters, travel, and his love of music. He also served as Artistic Director at Ecart International, where he designed new furniture collections.



ECART



CHRISTOPHE PILLET

AXE LAMP
(c. 1997)

ECART



CHRISTOPHE PILLET

AXE LAMP
(c. 1997)

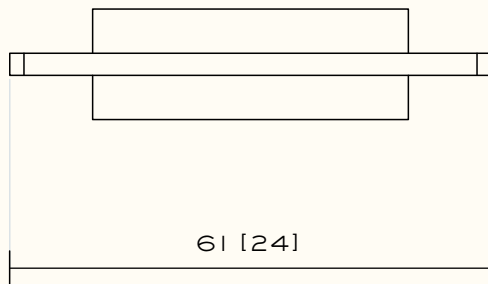
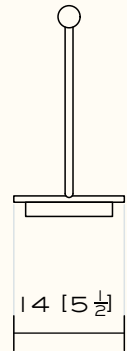
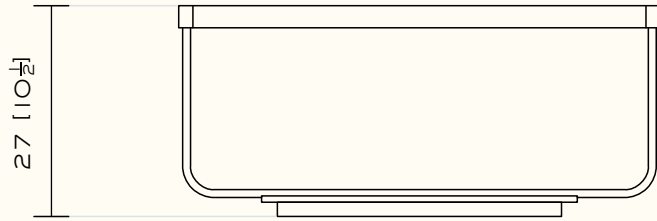
ECART



CHRISTOPHE PILLET

AXE LAMP
(c. 1997)

ECART



CHRISTOPHE PILLET

AXE LAMP
(c. 1997)

LED option available.
The structure pivots on both sides of a vertical axis.
The reflector is adjustable.
2*20W.

ECART